

# Corometrics 250cx Series Maternal/Fetal Monitors with Maternal Temperature Option

Comprehensive perinatal monitoring



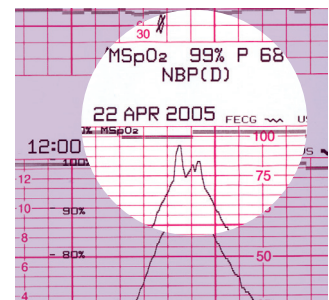


# An experience without equal.

Pregnancy and childbirth are intimate, vulnerable times for a mother and her baby. To care for them throughout labor, delivery, and recovery, you need a monitoring system as vigilant as you are.

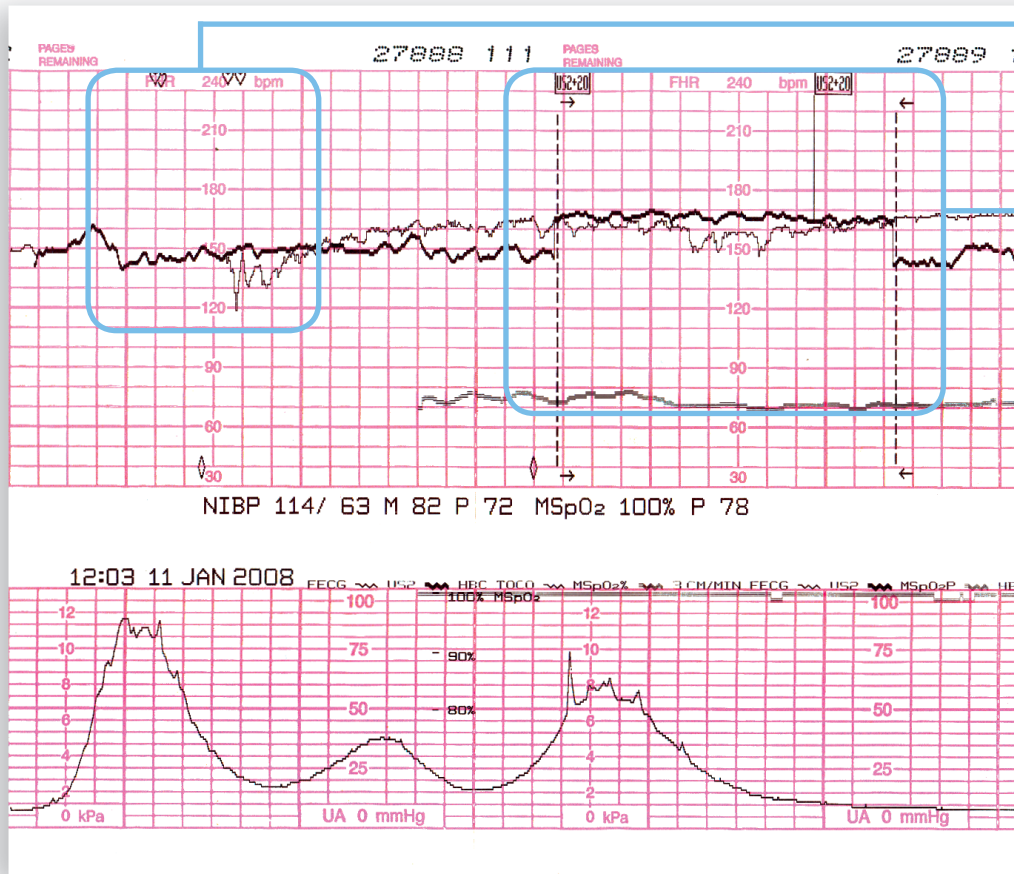
Corometrics\* 250cx Series monitors give you the ability to address the monitoring needs for both the mother and the fetus – all with a single system. With flexibility and convenience, the Corometrics 250cx Series provides the detailed information clinicians need to ensure a personalized birthing experience.

From prenatal evaluations to postpartum assessments, and every stage in between, you can depend on the Corometrics 250cx Series of maternal/fetal monitors.

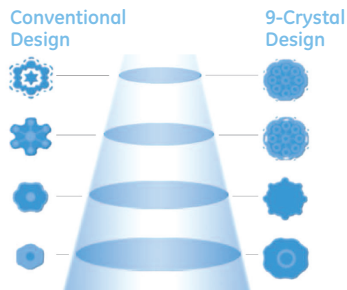


**Patented DINAMAP® SuperSTAT™ Non-Invasive Blood Pressure (NIBP) technology** speeds up determinations to enhance patient comfort while retaining reliability.

**GE-exclusive Smart BP™** delays blood pressure measurement during contractions to reduce patient distraction and provide more meaningful diagnostic data.



Our Nautilus™ watertight 9-crystal ultrasound and toco transducers are designed for bedside monitoring, telemetry, and hydrotherapy. The toco transducer's flat-surface is designed to help reduce visible marks and provide a more comfortable fit.



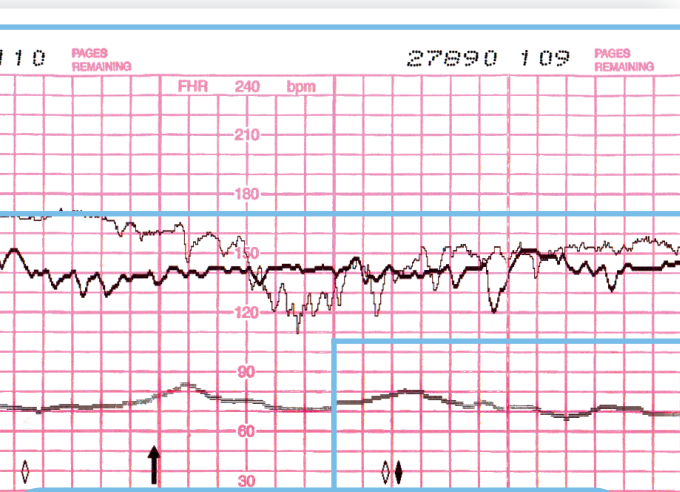
Nautilus 9-crystal ultrasound transducers achieve a wider focal region for more uniform coverage at greater depths than conventional 7-crystal transducers. Nautilus 9-crystal ultrasound transducers are designed to ensure minimal re-positioning, even with challenging patients of varying sizes, shapes, and gestational ages.



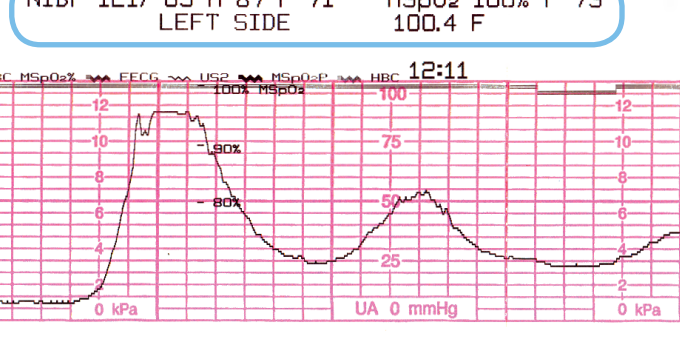
When monitoring twins, independent volume controls facilitate transducer placement by allowing both heart rates to be heard at the same time.



**Maternal temperature**  
The Exergen TAT-5000 TemporalScanner™ option allows clinicians to obtain maternal temperature using non-invasive infrared technology that detects heat from the skin's surface. Temperature readings are automatically recorded and stored with other maternal vital signs.



- Heart Beat Coincidence**  
Visual and audible indications of synchronous fetal and/or maternal heart rate with clear overlapping heart symbol.
- Heart Rate Offset**  
Easily assess the heart rates of twins by temporarily offsetting the secondary FHR by +20 BPM.
- Maternal Parameters**  
Comprehensive recording of maternal parameters including a choice of integrated Masimo SET or Nellcor MSpO<sub>2</sub> and optional maternal temperature.



VITAL SIGNS HISTORY			
DATE:	11-JAN 11	JAN 11	JAN 11
TIME:	12:04	12:08	12:11
NIBP			
SYS	114	121	---
DIA	63	65	---
MAP	82	87	---
PR	72	71	---
MSpO <sub>2</sub>			
%O <sub>2</sub>		100	99
PR		72	69
MHR			
TEMP			100.4

TIME	FHR	MHR	MSpO <sub>2</sub>	NIBP	TEMP
11 JAN 2008					
12:37					
12:38					
12:41					
12:43					
12:43					

Document up to eight hours of vital signs history.

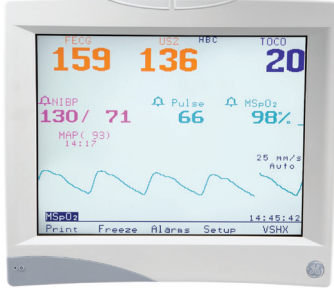
Paper-saving Maternal Recovery Mode.



ChartLight™ with new backlit keys and a dimmable display helps caregivers work comfortably while patients remain relaxed in a low-light environment.



The Corometrics 250cx Series is compatible with Centricity® Perinatal (formerly QS® Perinatal) Clinical Information System, as well as other information systems. This connectivity streamlines the capture and archiving of patient data, helping to speed workflow and ensure data availability.



The optional 15" color VGA Extend-A-View™ Remote Display provides the clinician with access to the same maternal and fetal vital parameters as displayed on the bedside maternal/fetal monitor. This display may be conveniently located on the opposite side of the labor-room bed or on the anesthesia cart in the OR.

# Technology with a sensitive side.

Technology is an integral part of the modern birthing environment. But childbirth remains an intensely personal experience. Corometrics 250cx Series monitors give you the knowledge and confidence to treat the varying needs of your patient during this dynamic process.

The Corometrics 250cx Series combines advanced clinical capabilities with the reliability you demand. These advanced maternal/fetal monitors comprise a high-tech system that allows you to deliver a high-touch experience for your patient – including the opportunity to celebrate the birth with a choice of 3 songs.

## **Only the best for baby**

For every patient, nothing short of excellence will do. The Corometrics 250cx Series fetal monitoring capabilities include Fetal ECG for continuous, direct Fetal Heart Rate (FHR) data with waveform display and printing.

Fetal heart rate high/low alarms provide both audible and visual alerts if the FHR is outside of the user-defined high/low range. Optional and innovative Spectra Alerts™ simultaneously analyze FHR and Uterine Activity (UA) information, and alerts clinicians of deviations from the norm.

## **Keeping tabs on mom**

Maternal well-being is frequently assessed during the physically demanding process of labor, delivery and recovery. The Corometrics 250cx Series provides a choice of integrated Masimo SET® or Nellcor® maternal pulse oximetry (MSpO<sub>2</sub>), making it easy for the clinician to monitor, document, and even view the waveform. The selectable 3-lead maternal ECG with pacemaker detection and rejection generates maternal heart rate, QRS waveform display, and a six-second snapshot printout when requested. An optional 15" color VGA Extend-A-View™ Remote Display provides the clinician with access to the same maternal and fetal vital parameters as displayed on the bedside maternal/fetal monitor. This display maybe conveniently mounted on the opposite side of the labor-room bed or on the anesthesia cart in the OR.

# Connected where it counts.

With the Corometrics 250cx Series, a telemetry interface allows for continuous monitoring without changing transducers during ambulation or hydrotherapy. The result – constant surveillance of mother and baby, and an uninterrupted record of all events throughout labor and delivery.

The Corometrics 250cx Series is compatible with Centricity® Perinatal and other clinical information systems, enabling the capture and storage of a more comprehensive patient record. Access to the entire history of events during labor and delivery helps with quality decision-making, and contributes to a sense of confidence for both patient and caregiver.

© 2012 General Electric Company – All rights reserved.

General Electric Company reserves the right to make changes in specifications and features shown herein, or discontinue the product described at any time without notice or obligation. Contact your GE Representative for the most current information.

GE and GE Monogram are trademarks of General Electric Company.

Corometrics, DINAMAP, Centricity and QS are registered trademarks of General Electric Company.

GE Ohmeda, Smart BP, Nautilus, ChartLight and Spectra Alerts are trademarks of General Electric Company.

All other company and product names mentioned may be trademarks of the companies with which they are associated.

GE Medical Systems Information Technologies, Inc., a General Electric company, doing business as GE Healthcare.

## Healthcare Re-imagined

GE is dedicated to helping you transform healthcare delivery by driving critical breakthroughs in biology and technology. Our expertise in medical imaging and information technologies, medical diagnostics, patient monitoring systems, drug discovery, and biopharmaceutical manufacturing technologies is enabling healthcare professionals around the world to discover new ways to predict, diagnose and treat disease earlier. We call this model of care “Early Health.” The goal: to help clinicians detect disease earlier, access more information and intervene earlier with more targeted treatments, so they can help their patients live their lives to the fullest. Re-think, Re-discover, Re-invent, Re-imagine.

GE Healthcare

Wipro GE Healthcare Private Limited

No: 4 Kadugodi Industrial Area

Bangalore 560067 Karnataka INDIA

[www.gehealthcare.com](http://www.gehealthcare.com)



imagination at work